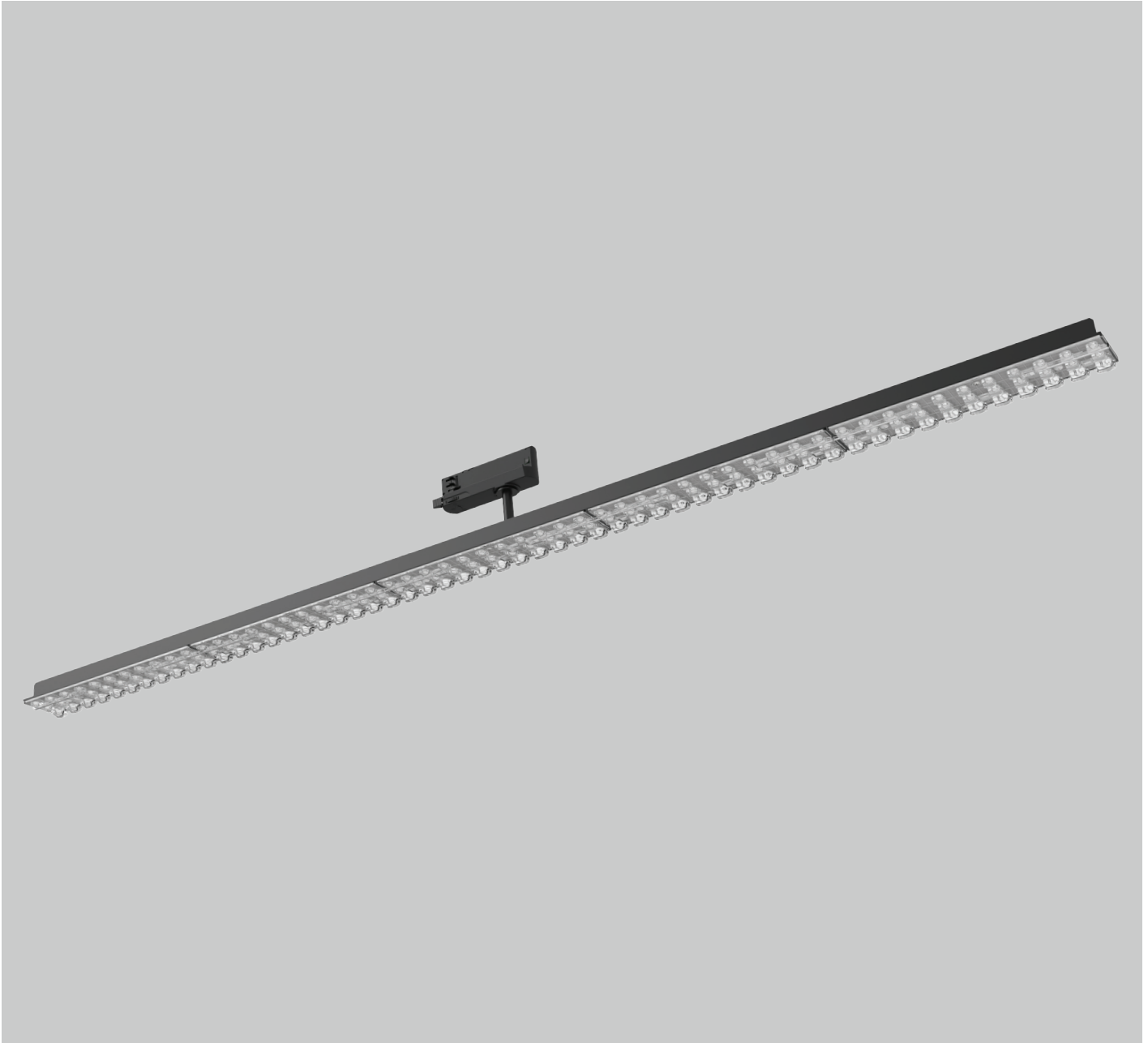


# TRUNKI RAIL



Linear trunking system based on standard 3phase or DALI track system with high quality lens optics. Top quality SMD LED modules with colour consistency MacAdams 3, extensive portfolio of lumen ranges, CCTs and spectra. Variety of drivers: standard EVG on/off, DALI and wireless controlled as MasterConnect on request. Remote, wireless occupancy & daylight sensor available to allow significant energy savings and wireless connectivity. Mounting directly on 3phase or DALI track. Body is made of steel and aluminium. Standard colour RAL 9005S, other colours on request. Variety of beam angles, lumen outputs and drivers allows to use this luminaire in different types of lighting projects.

Luminous flux & Luminaire Power tolerance up to 10%. System power consumption depends on components used. Luminous efficacy depends on type of LED's, electronics, optics and diffusor. The most up to date technical parameters can be found on our website and in database of LDT files.

Lighting direction



PDF datasheet:



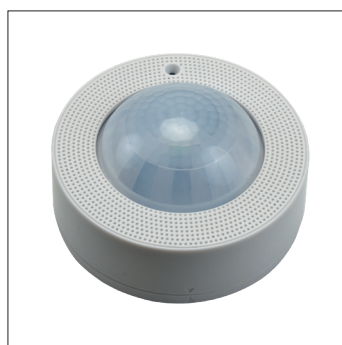
# TRUNKI RAIL

<b>Mounting:</b>	Track mounted on 3phase or DALI track system
<b>Body material:</b>	Steel and aluminium
<b>Colour:</b>	Standard white RAL 9003S, other RAL colours on request
<b>Lumen output:</b>	Standard up to 10.000 lm / 1500 mm long unit, any other on request
<b>LED module:</b>	Signify (Philips), Tridonic or equivalent SMD LED module
<b>Colour temperature:</b>	3000/4000/5000/6500K, other on request
<b>Colour Rendering:</b>	CRI>80 in standard, other on request
<b>Driver:</b>	EVG on-off, DALI,MC (MasterConnect), other on request
<b>Wireless control:</b>	Philips MasterConnect on request
<b>Daylight/Occupancy sensor:</b>	Wireless MCS or MCS IP65 sensor, other on request
<b>Emergency unit:</b>	N/A
<b>Operating temperature range:</b>	0°C ... +35°C
<b>IP Class:</b>	IP20 in standard
<b>Power:</b>	220-240V 50/60Hz
<b>Lighting direction:</b>	Direct lighting
<b>Light distribution:</b>	Symmetric
<b>Optics:</b>	Lens
<b>Beam angle:</b>	30°/60°/90°/ASY - asymmetrical/DBASY - double asymmetrical
<b>Diffuser:</b>	PMMA
<b>Warranty:</b>	5 Years standard warranty

## TRUNKI RAIL track mounted luminaire

All current index numbers, lumen outputs, power consumption and many other technical information are available in our 2024 pricelist. Details on wireless lighting control systems on page number 896.

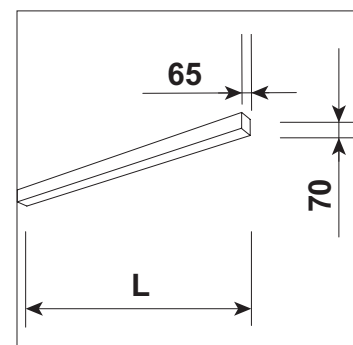
3 phase and DALI track systems and accessories available on page number 682.



MCS IP65 wireless daylight&occ sensor



XCS wireless switch



Basic dimensions